

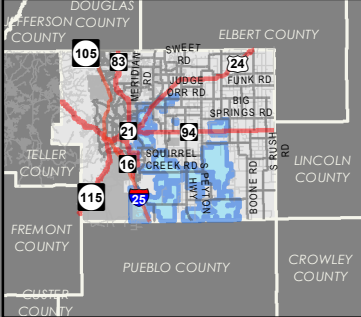
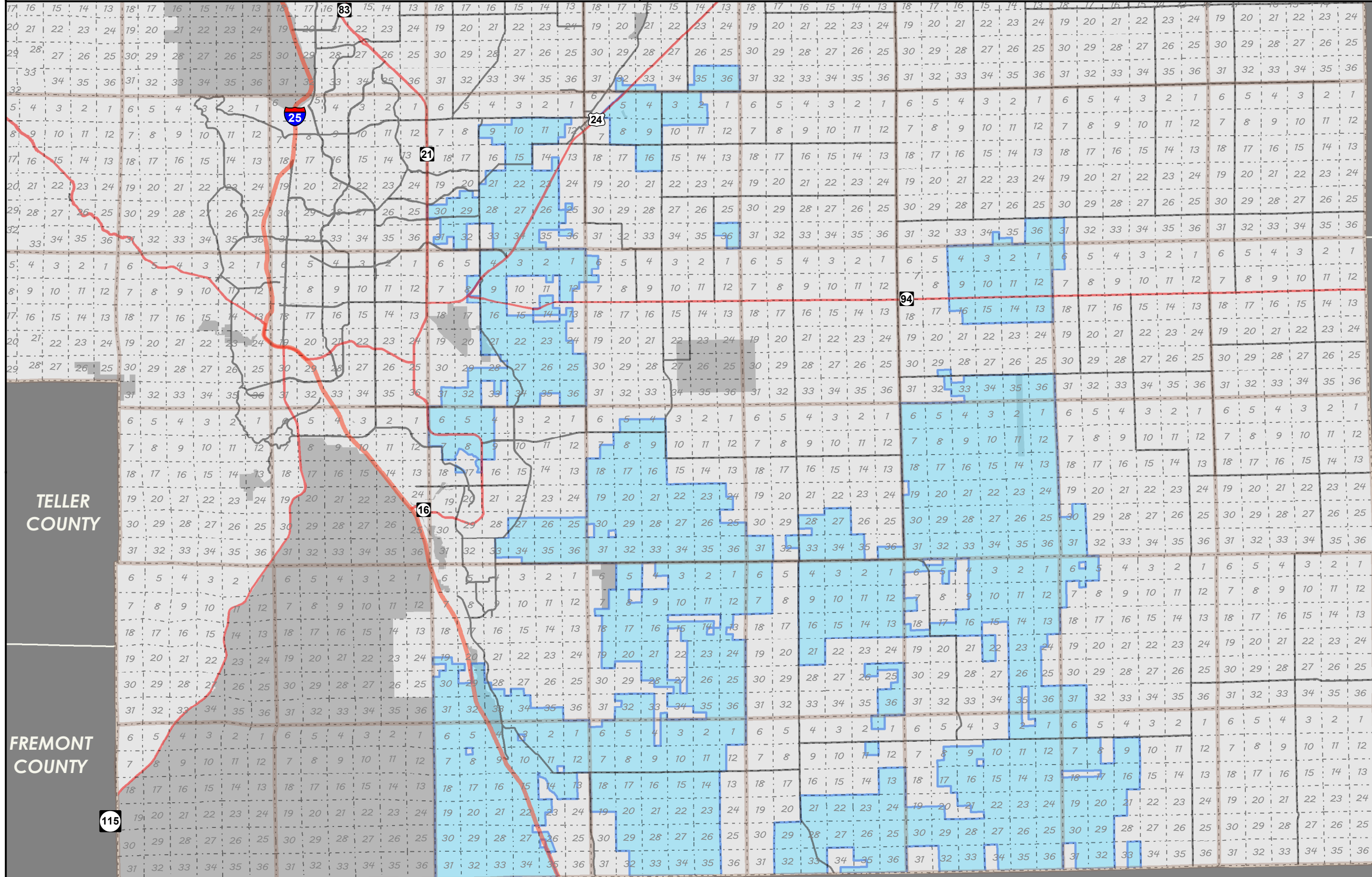
CENTRAL COLORADO CONSERVATION DISTRICT

 Tax Boundary

1 inch = 19,183.88 feet

08/27/2018 EPC Assessor's Office
NAD_1983_StatePlane_Colorado_Central_FIPS_0502_Feet
Projection: Lambert_Conformal_Conic

COPYRIGHT 2018 by the Board of County Commissioners, El Paso County, Colorado. All rights reserved. No part of this document or data contained hereon may be reproduced, used to prepare derivative products, or distributed without the specific written approval of the Board of County Commissioners, El Paso County, Colorado. This document was prepared from the best data available at the time of plotting and is for internal use only. El Paso County, Colorado, makes no claim as to the completeness or accuracy of the data contained hereon.



TELLER COUNTY

LINCOLN COUNTY

FREMONT COUNTY

PUEBLO COUNTY

CROWLEY COUNTY

115

16

21

24

94

33

25

33