


# EL PASO COUNTY CONSERVATION DISTRICT

 Tax Boundary

1 inch = 26,022.3 feet

08/27/2018 EPC Assessor's Office  
NAD\_1983\_StatePlane\_Colorado\_Central\_FIPS\_0502\_Feet  
Projection: Lambert\_Conformal\_Conic

COPYRIGHT 2018 by the Board of County Commissioners, El Paso County, Colorado. All rights reserved. No part of this document or data contained hereon may be reproduced, used to prepare derivative products, or distributed without the specific written approval of the Board of County Commissioners, El Paso County, Colorado. This document was prepared from the best data available at the time of plotting and is for internal use only. El Paso County, Colorado, makes no claim as to the completeness or accuracy of the data contained hereon.

JEFFERSON  
COUNTY

DOUGLAS  
COUNTY

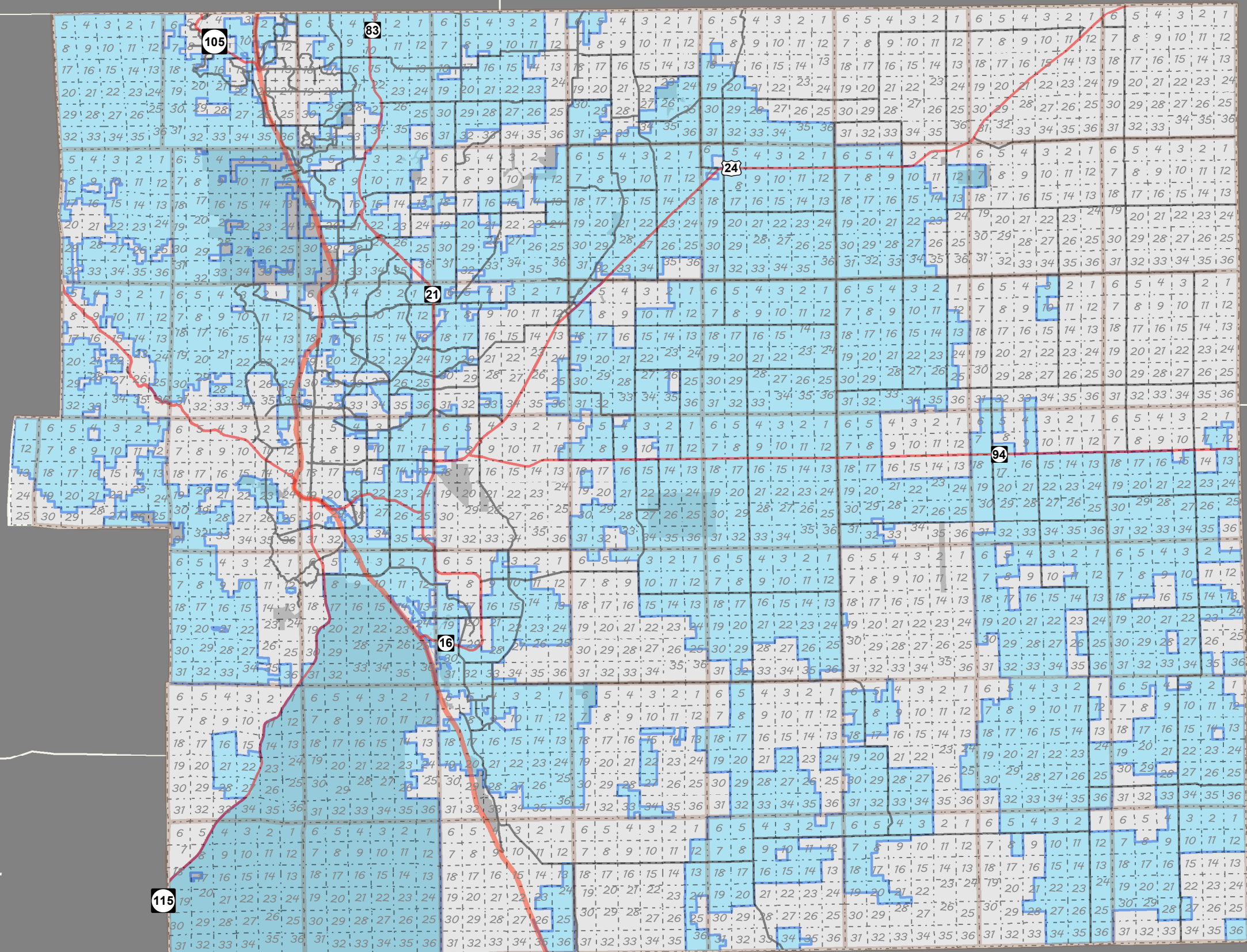
TELLER COUNTY

FREMONT  
COUNTY

PUEBLO COUNTY

LINCOLN  
COUNTY

CROWLEY  
COUNTY



ELB

